



Support. Equip. Empower.

Computer/Electronic
Accommodations Program

Purpose and Agenda



Purpose

To provide a working understanding of the Assistive Technology and Accommodation Services that Computer/Electronic Accommodations Program (CAP) can provide

Agenda

- Assistive Technology Overview
- CAP Services Overview
- CAP Resources
- Questions

CAP Quiz 1

1. Which of the following can CAP assist with or provide accommodations for?

*Select all that apply

- a. Mobility/Building Navigation
- b. Dexterity
- c. Communication
- d. Seating and positioning
- e. Deaf/Hard of Hearing
- f. Blind/Low Vision
- g. All of the Above

CAP Quiz 2

2. Which of the following qualify as computer/electronic assistive technology?

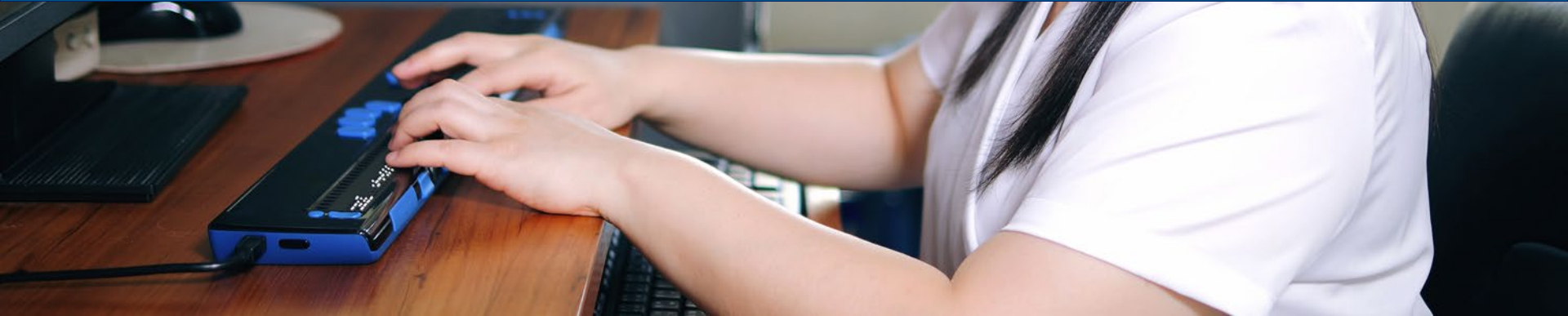
*Select all that apply

- a. Work place furniture to support employee for medical issues
- b. Lighting and soundproofing modifications to improve the work space
- c. A service or device to increase functional capabilities of individuals with disabilities
- d. Scooters, wheelchairs and/or building modifications to improve work place access



ASSISTIVE TECHNOLOGY

Assistive Technology Act (AT) Definitions



As defined by the Assistive Technology Act of 1998

- **AT services** assist an individual with a disability in the selection, acquisition, or use of an assistive technology device
- **AT devices** are used to increase, maintain, or improve the functional capabilities of individuals with disabilities

CAP Disability Categories



Dexterity



Cognition



Deaf/Hard of Hearing



Communication



Blind/Low Vision

Dexterity



What are Dexterity Conditions?

Dexterity conditions refer to

- any physical disability that limits the physical function of one or more limbs
- conditions may include quadriplegia, paraplegia, multiple sclerosis, cerebral palsy, carpal tunnel syndrome, tendonitis, arthritis, sciatica, amputations or degenerative disc disease
- limitations affecting mobility could include decreased range of motion in the arms, fingers, wrists, back or neck, and decreased muscle control, spasms, paralysis, tingling or numbness

Dexterity Solutions



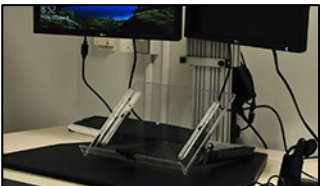
Dexterity accommodations may include:



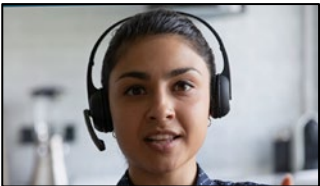
Alternative keyboards, input devices, and voice recognition software



Back / seat support



Positioning tools such as document holders, monitor arms, and keyboard trays



Telephone headsets

Blind/Low Vision



What are Vision Conditions?

Vision conditions:

- Impact the ability to see, either partially or completely
- Conditions may include glaucoma, cataracts, macular degeneration, retinopathy or total blindness
- Limitations could include blurriness, blind spots, floaters, tunnel vision or any other visual disturbances

Blind/Low Vision Solutions



Vision accommodations may include:



Screen readers



Magnification software



Notetakers



Closed circuit
televisions (CCTVs)



Scanner / readers



Large print keyboards



Braille displays /
braille embossers

Deaf/ Hard of Hearing



What are Hearing Conditions?

Hearing conditions:

- Impact the ability to hear, either partially or completely
- Conditions may include otosclerosis, tinnitus, and deafness
- May cause limitations resulting in difficulty hearing certain volumes, tones or frequencies, ringing in the ears, or the inability to hear anything at all

Hearing Solutions



Hearing accommodations may include:



Assistive listening devices such as Frequency Modulation (FM) systems



Telephone access through videophones, captioned telephones, or amplified telephones



Clear masks



Deaf-to-Hearing communication devices

Cognition



What are Cognitive Conditions?

Cognitive conditions:

- Include any disorder that significantly impairs the cognitive function of an individual
- May include dyslexia, attention deficit hyperactivity disorder (ADHD), multiple sclerosis, stroke, Alzheimer's disease, and traumatic brain injury (TBI)
- Limitations could include memory loss, decreased organization, decreased concentration, word finding difficulty, or orientation difficulty.

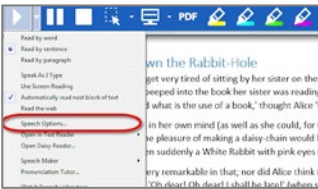
Cognition Solutions



Cognitive accommodations may include:



Cueing and memory aids



Literacy software



Noise cancelling headsets



Recording devices such as pens and digital voice recorders

Communication



What are Communication Conditions?

Communication conditions:

- Impact an individual's ability to communicate
- May include apraxia or voice disorders
- Limitations may include the inability to amplify the volume of speech or being non-verbal

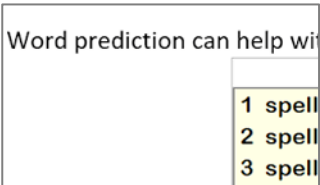
Communication Solutions



Communication accommodations may include:



Voice amplification devices



Word prediction software



Augmentative communication devices



CAP SERVICES

CAP Services



Interpreting Services



Training/Technical Services



CART Services



Technology Demonstration



Video/Media Captioning Services



Needs Assessments



CAP RESOURCES

CAP's Online Training Modules

We have developed a series of online training modules. Learn about disability etiquette, reasonable accommodations, how to work with CAP and challenges in employment.



CAP's Quick Tips

CAP has created a series of short videos to help answer some of our customer's most frequently asked questions.



CAP's Webinars

CAP has recorded a series of webinars to share the CAP training experience with our customers and stakeholders around the world. To see newly recorded webinars and a list of upcoming topics, please visit our website.



Request CAP at Your Event

CAP may be able to come to your location to provide briefings, trainings, and needs assessments. Please visit the Training & Outreach section of our website to request CAP's attendance.



Connect with CAP



Facebook

www.facebook.com/DoDCAP



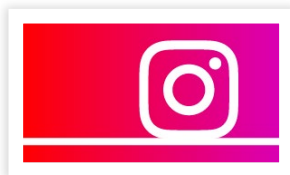
Twitter

www.twitter.com/DoDCAP



YouTube

www.youtube.com/TheDoDCAP



Instagram

www.instagram.com/dod_cap

CAP Contact Information

Phone: 703-614-8416
833-227-3272

Videophone: 571-384-5629

Email: cap@mail.mil

Website: www.cap.mil

CAPTEC

Phone: 703-693-5160

Email: cap.capttec@mail.mil
cap.outreach@mail.mil



QUESTIONS?

