



Deaf/Hard of Hearing: Assistive Technology



Definition: Conditions that impact the ability to hear partially or entirely.

Conditions and limitations: Otosclerosis, tinnitus, deafness, difficulty hearing certain volumes, tones, or frequencies, ringing in the ears, or the inability to hear anything at all.



UbiDuo3 Face-to-Face Communicator

The UbiDuo3 is a deaf-to-hearing communication device. It has two keyboards and touchscreens, so two users can communicate in real time via text. The device includes a mini-HDMI port for connecting to a TV or projector and is portable.

ClearSounds ClearRing HC-CR200

The ClearSounds ClearRing HC-CR200 is a signaling device for telephones. It alerts users to calls with a loud ringer and flashing strobe.



Bellman & Symfon Domino Pro

The Bellman & Symfon Domino Pro is an assistive listening device. It filters background noise and enhances speech. The system includes a transmitter, receiver, travel case, in-ear earphones, tie-clip microphone, neck straps, belt clips, universal charger, TV and stereo cable kit, user manual, and pocket guide. It features both directional and omnidirectional microphones. The device uses 16-bit digital signal processing and 128-bit digital encryption.

Jabra Biz 2400 II QD Duo UNC Headset

The Jabra Biz 2400 II QD Duo UNC Headset is a wired headset with an over-the-head design. It features a quick-disconnect plug and an adapter for instant connection to many desk phones. The boom microphone includes noise cancelation to eliminate loud, harmful sounds.





CapTel 2400i

The CapTel 2400i is a voice-carry-over telephone. It provides real-time captioning during calls through a high-speed internet connection. Calls are automatically routed through a captioning service center. The device features a large, colorful display. It offers dial-by-picture capability for users who prefer touchscreen technology. Captions appear in adjustable font sizes and colors. The caller ID can store up to 95 names and numbers in its phone book. There is a built-in answering machine with captions. The phone offers adjustable tone and volume control up to 40 decibels. It can function as a standard phone for those who do not need captions. It is compatible with Bluetooth and WiFi.



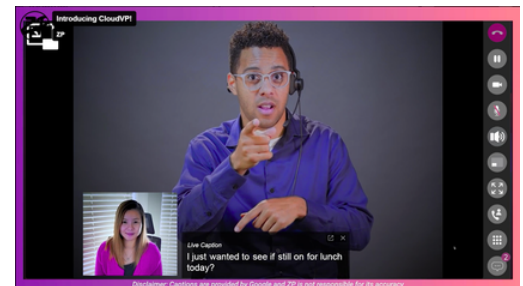
Interact-AS Software

The Interact-AS Software is a deaf-to-hearing communication system. It transcribes spoken words into written text on the computer it runs on. It also generates speech from typed content. One person can speak into a microphone, which then transcribes the words into text for another person. The other person can type a message back, and the system will read it aloud.

CloudVP

The CloudVP WebRTC solution enables Video Relay Service (VRS) calls from a web browser. If your desktop, laptop, or tablet does not have a webcam, you may install one.

NOTE: This is an application and cannot be provided through CAP. Users should coordinate with their agency or accessibility office to obtain and install it if approved.





Cognition: Assistive Technology



Definition: Conditions that impact cognitive function of an individual.

Conditions and limitations: Dyslexia, attention-deficit/hyperactivity disorder (ADHD), multiple sclerosis (MS), stroke, post-traumatic stress disorder (PTSD), traumatic brain injury (TBI), memory loss, difficulty with concentration and executive functioning.

Moleskine Smart Set

The Moleskine Smart Set includes a digital smartpen and an N-coded smart notebook. The smartpen records written and verbal information during meetings. It uses a camera to capture pen strokes on the N-coded paper. The data is transferred to the user's device via Bluetooth via the companion app. The Moleskine Android or Apple/iOS app syncs recorded audio with notes.



Bose QuietComfort Earbuds

These Bose QuietComfort Earbuds deliver in-ear noise-cancellation with three modes: Quiet, Aware, and ANC Off. You can switch these modes on or off as needed. Each charge provides 6 hours of battery life, and the earbuds include a USB charger.

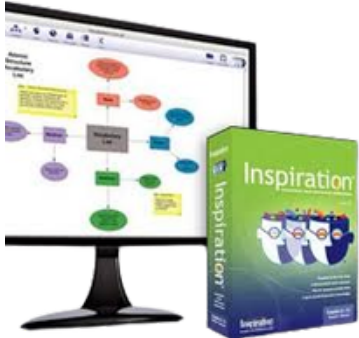
Blackboard 2.0 by BoogieBoard with Liquid Crystal Paper

The Blackboard 2.0 by BoogieBoard with Liquid Crystal Paper is an electronic writing tablet. It serves as a reusable notebook for notes, planners, sketches, and designs. The LCD screen offers high contrast for legibility. The magnetic stylus is stored in its holder. The free Blackboard app lets you save and organize files as PDFs or JPEGs.



Philips Model#DPM8000-Full Recorder Kit

The Philips Digital Pocket Memo 8000 records audio for playback or reference. Its microphone picks up sound in all directions and adjusts to different environments. Users create files and operate the device with a slide switch and light sensor. The recorder encrypts files in real time with a 256-bit key.



Inspiration Software

Inspiration Software is a visual thinking program that allows users to create mind maps, concept maps, graphic organizers, outlines, and presentations. The software supports critical thinking, conceptual understanding, and writing skills, and is compatible with Windows.

Kurzweil 3000

The Kurzweil 3000 is educational software that assists individuals who have difficulty reading, writing, organizing thoughts, and concentrating. It offers text-to-speech in seven languages and highlights each word as it is read aloud. Users can highlight information and add notes. The software includes graphic organizers, templates, and word-prediction tools to support writing.



PenFriend 3 Voice Labeling System

The PenFriend is an audio labeler that lets users label items with their recorded voice. The user records on the pen, and the self-adhesive label can be placed anywhere. When you touch the pen to the sticker, the recorded message plays back. The pen uses two AAA batteries. It has 250 hours of recording space and an SD card slot for up to 16GB.





Vision: Assistive Technology



Definition: Conditions that impact the ability to see partially or entirely.

Conditions and limitations: Glaucoma, cataracts, macular degeneration, retinopathy, or total blindness.



IRIScan Book 5

The IRIScan Book 5 is a handheld CCTV that scans and digitizes text and pictures from documents and books. It connects to a computer via USB. Users can convert scanned content into editable Word, Excel, or PDF files. The companion Readiris optical character recognition software can read text aloud and edit scanned content. The IRIScan Book 5 features high resolution up to 1,200 dpi. It also includes a rechargeable 800 mA Li-ion battery.

Optelec Compact 10 HD Speech US

The Optelec Compact 10 HD Speech US is a video magnifier. Its 10" display enlarges newspapers, letters, and magazines, making text and images easy to see. The swing-out arm scans entire pages and reads them aloud with a single tap on the touchscreen. A marker at the bottom indicates where to position documents for reading. The device offers seamless zoom from 0.5x to 22x and multiple color contrast settings.



ZoomText Magnifier/Reader

The ZoomText Magnifier/Reader is a comprehensive magnification and reading solution for low-vision users. It enlarges and sharpens all on-screen content, vocalizes keystrokes and key program events, and automatically reads documents, web pages, and emails. The software delivers magnification up to 36x and diverse color enhancement settings. Users can also customize magnification for smoother navigation.

Zoomtext Keyboard (Black on Yellow)

The Zoomtext Keyboard (black on yellow) is a wired, large print keyboard designed for use with Zoomtext Magnifier/Reader software. Its 36-point, high-contrast black lettering appears on bright yellow keys. Eighteen dedicated keys directly control standard Zoomtext features.





OrCam Read

The OrCam Read is a smart camera that reads printed material aloud. It reads entire passages instantly, without scanning each word or sentence. It suits individuals with mild low vision, reading fatigue, reading challenges such as dyslexia, and anyone who processes large amounts of text.

JAWS Professional for Windows

The JAWS Professional for Windows is a screen reader that uses synthesized speech to describe the screen. Features include a text analyzer, OCR for images and PDFs, and advanced analysis options. JAWS supports 32-bit and 64-bit versions of Windows 10, 8.1, 7, Server 2008, and 2012. It is compatible with refreshable Braille displays.



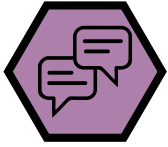
Explore 5 Handheld Electronic Magnifier

The Explore 5 Handheld Electronic Magnifier is a portable CCTV that can freeze images and magnify from 2x to 22x. It offers five contrast combinations: full color, black or white, white on black, black or yellow, and yellow on black. It features a 5-inch LCD, 3-hour battery life, and a kickstand that serves as a handle for magnification on the go..

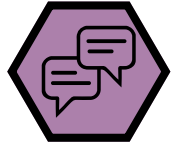
C-Pen Exam Reader 2

The C-Pen Exam Reader 2 is portable and rechargeable. It reads text aloud and displays scanned words on a small screen. The package includes a reader pen, a carry case, a USB cable, an instruction manual, and earbuds.





Communication: Assistive Technology



Definition: Conditions that impact an individual's ability to compose language and convey a message by speech or other means.

Conditions and limitations: Aphasia, cognitive communication disorders, speech and voice disorders.



NuVois III Artificial Larynx

The NuVois III Artificial Larynx is a speech aid that replaces vocal cords. It features volume and tone/pitch buttons, which allow for inflection and a more natural sound.

Chattervox VM

The ChatterVox VM is a portable voice amplifier worn around the waist that boosts the user's voice by up to 18 decibels and lasts 14 hours on a single charge. It includes microphone accessories for various speaker needs.



TextSpeak Mini Wireless Keyboard

The TextSpeak Mini Wireless Keyboard is a speech generation system featuring a palm-sized compact and a mini wireless keyboard. The device lets users type what they wish to say, and it relays it using synthesized speech. It works without a PC and includes alphabet-only words. Users can also choose different phrases and assign them to specific keys to have readily accessible points.

Shure SLXD24/SM58 Wireless System

The Shure SLXD24/SM58 is a voice amplifier with a handheld wireless microphone providing a range of 120 decibels and a half-rack receiver with an LCD screen and removable antennas. The microphone operates for 8 hours on 2 AA batteries or a rechargeable battery.



Grid 3 Software

The Grid 3 Software is an augmentative communication tool for Windows devices. It offers a diverse library of grid sets, enabling users to generate speech through keyboards, phrase buttons, or symbols. Supporting touch, switch, eye gaze, and pointing devices, it allows users to personalize pages with larger text, high-contrast colors, or enlarged symbol cells. Built-in word prediction and AI-driven correction streamline message composition. Users can select from various voice options, including a customized, banked voice. Message Banking enables individuals with some speech to record and use their own voice in the app. Integration with smartphones, internet, and email provides easy communication across platforms.





Dexterity: Assistive Technology



Definition: Conditions that limit the use or function of one or more limbs.

Conditions and limitations: Quadriplegia, paraplegia, multiple sclerosis (MS), cerebral palsy (CP), carpal tunnel syndrome (CTS), tendonitis, arthritis, sciatica, amputations, or degenerative disc disease (DDD).



Dragon Professional 16 (Electronic)

The Dragon Professional 16 is an advanced speech recognition software. This package includes both the software and the Andrea NC-181 V/M USB Headset. It recognizes voice commands to operate the computer. The program enables users to create and edit documents in Microsoft Office, manage emails, and navigate the internet hands-free. It streamlines routine computer processes using templates and macros.

Adesso Desktop Ergonomic Keyboard

The Adesso Desktop Ergonomic Keyboard (AKB-150UB) is a wired keyboard with a split-key layout and built-in palm rest, promoting a natural hand position. It offers a USB interface, 13 programmable hotkeys, and is compatible with Windows.



Kinesis Freestyle2 VIP3 Keyboard

The Kinesis Freestyle2 VIP3 Keyboard is a wired ergonomic keyboard. It features the VIP3 accessory, providing adjustable tenting angles of 5, 10, or 15 degrees. The keyboard itself maintains a flat profile, and its split halves can be positioned up to 9 inches apart. It does not include an integrated numeric keypad, but one can be added if required.

Goldtouch Elite USB PC/MAC Comfort Keyboard

The Goldtouch Elite Adjustable Ergonomic keyboard is wired. Users can precisely adjust horizontal splay and vertical tenting to align wrists, hands, and forearms. A squeeze mechanism enables independent adjustment of each half, which connect at the center top. The keyboard comes with a dual-compatible cable for PC and Mac. It lacks a built-in numeric keypad on the right, but an external keypad is available if required.



Rollermouse Red

The RollerMouse Red is an alternative pointing device that sits in front of your keyboard. It uses a patented Rollerbar to control the cursor. The device emphasizes fingertip use and works ambidextrously. Features include a left-click function, one laser sensor, and six peripheral sensors. Both fingers and thumbs can roll and slide. Its front placement eliminates the need to reach for the mouse, reducing unnecessary muscle activity in arms, shoulders, and neck.





Adesso iMouse E1 Vertical Ergonomic Illuminated Mouse

The Adesso iMouse E1 Vertical Ergonomic Illuminated Mouse is a wired alternative pointing device with a vertical orientation and contoured shape. It has two ergonomic side buttons for seamless navigation between web pages. The 1000/1600 switchable DPI control offers two cursor speed levels, suitable for various environments. Advanced optical sensor technology keeps the mouse precise, letting you work on most surfaces without a mouse pad.

Perixx REMICE-517 Wired Ergonomic Trackball Mouse

The Perixx PERIMICE-517 is a wired ergonomic trackball mouse. Its quiet buttons, left, right, backward, forward, and DPI switches, operate simultaneously with the trackball. The manufacturer recommends this product for users with repetitive strain injuries (RSI) and for those who work on the computer for extended periods. A special treated glitter effect coats the high-density trackball surface.



CustomAIR Back Support

The CustomAir Back Support is a lumbar support placed on a chair to provide additional back support. It has a built-in pump that inflates and deflates to create a custom fit for individual needs. It also supports the upper back and can be adjusted vertically to cover the thoracic to lumbar region. The product's dimensions are 21 x 18 x 5.5 inches.

Purple Royal Seat Cushion

The Purple Royal Seat Cushion cradles the tailbone while cushioning the rest of the seat. Its gel grid technology helps it stay cool and it has a non-slip cover. The product's dimensions are 17.5 x 15.75 x 2 inches.



Rite-in-Line Document Holder

The WorkRite Rite-in-Line is a document holder. It lets users place hard copy documents directly in front of the monitor and measures 11.5 inches wide. It features an angle adjustment from 42 to 82 degrees. It also includes a slide-guide rule strip and can hold documents like binders and catalogs. The height adjusts up to 5 3/8 inches.

Humanscale M10 Dual Monitor Arm

The Humanscale M10 Dual Monitor Arm is designed to hold heavier equipment. A strong triple crossbar supports up to three monitors or 48 pounds. It features a crossbar for two monitors, a handle, and can be clamped to the desk edge or bolted through the desk.

